

# Detailed Curbing

CONTINUOUS CONCRETE BORDERS

We are pleased to offer a wide variety of popular colors. You can pair any concrete color with any stamp color you wish. Please note that the colors may not be exactly as shown on your screen or printer.

## Concrete Colors



Omaha Tan (CC-101)



Earthtone Gold (CC-101)



Light Gray (CC-120)



Charcoal (CC-120)



Sunset Rose (CC-222)



Tile Red (CC-222)



Brick Red (CC-222)



Sandy Beige (CC-214)



Canyon Tile (CC-214)



Terra Cotta Blush (CC-214)



Coffee (CC-310)



Cocoa (CC-310)



Desert Sand (CC-324)



Mesa Brown (CC-324)



Taupe Gray (CC-422)



Taupe (CC-422)



Kahlua (CC-422)

# Detailed Curbing

CONTINUOUS CONCRETE BORDERS

## Stamp Colors



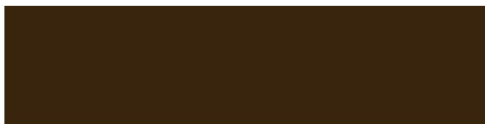
Autum Brown (RA 16)



Driftwood (RA 18)



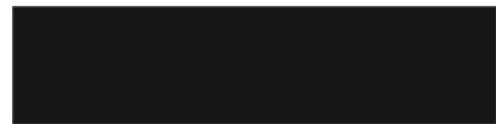
Chocolate (19)



Black Coffee (RA 20)



Dusty Charcoal (RA 22)



Black (RA 28)

## Stamps

### Texture Series



Cyclone



Woodgrain

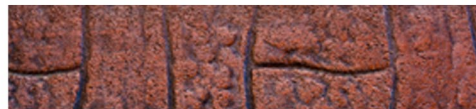


Deep Slate

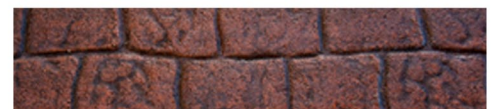
### Standard Series



Cobblerock



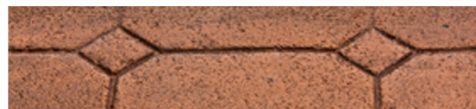
Basketweave



Rustic Brick



Tumblebrick



Diamond



Mini Stone

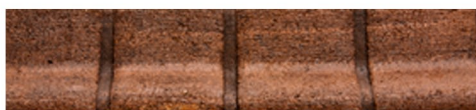


Outback



Random Stone

### Impression Series\*



Single Brick



Roman Single Brick



Sharp Double Brick



Roman Stone



Sharp Stone